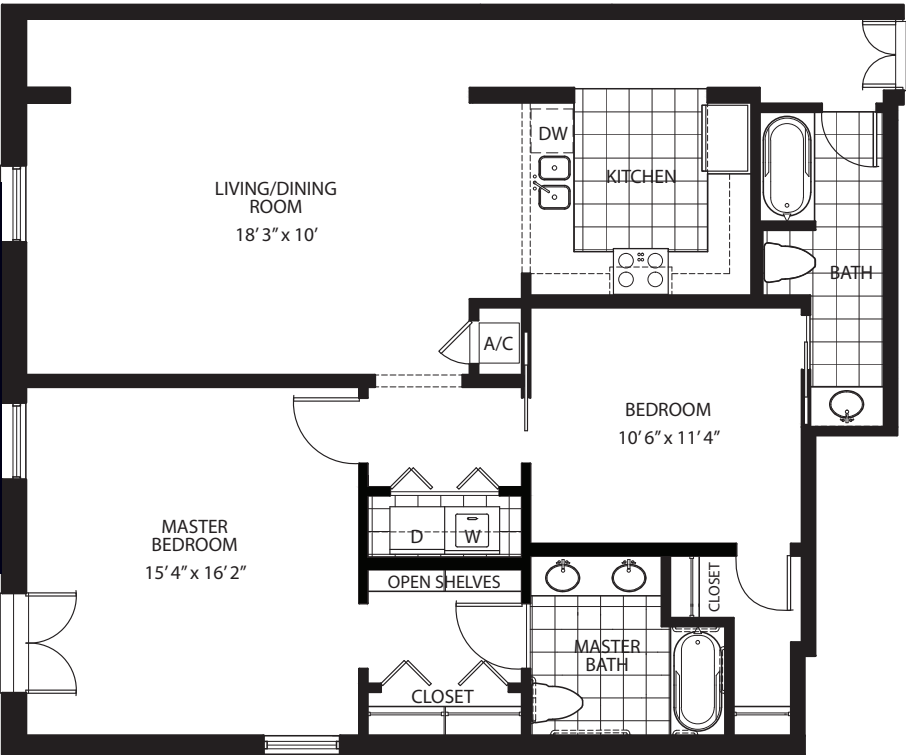


**UNIT 101**  
 2 BEDROOM | 2 BATH  
 1,227 Sq. Ft.  
 FROM \$ \_\_\_\_\_ /MO.



INSPIRING  
 INTERIORS

- RECLAIMED HEART OF PINE FLOORS
- SOARING 12' AND 14' CEILINGS\*
- DESIGNER-INSPIRED KITCHENS WITH GRANITE COUNTER TOPS AND ALL NEW WOOD CABINETRY
- PANTRY\*
- NEW, ENERGY STAR-RATED APPLIANCESUITE INCLUDES REFRIGERATOR, DISHWASHER, STOVE, AND MICROWAVE
- WASHER AND DRYER IN EACH RESIDENCE
- GENEROUS CLOSETS AND STORAGE SPACE
- ALARM SYSTEM
- CEILING FANS IN LIVING ROOM AND BEDROOMS
- ACCESSIBILITY FEATURES\*
- ON-DEMAND WATER HEATERS\*
- EXPOSED BRICK WALLS\*
- BALCONY\*
- \*SELECT RESIDENCES

THE **LOFTS**  
 AT  
**1041 URSULINES**

